

Draft

THE ARCTIC SDI CONCEPT

- 12 March, 2010 -

Draft

THE ARCTIC SDI CONCEPT

- Why? -

- The current interest of climate change in the Arctic has generated a wide array of spatial data.
- The datasets are often not integrated or coordinated and it is difficult to find an environment in which these diverse datasets can be combined and analysed together.
- A dedicated ASDI would allow for more robust management and manipulation of data for both research and management purposes.

Refer to Tom Barry (11/01/2008)

Draft

THE ARCTIC SDI CONCEPT

- How? -

User driven approach:

Four main categories of users are identified:

- The Arctic Council Working Groups (**AC** WGs)
- Research groups within the **International Polar Year** and other scientific communities engaged in Arctic research
- Government and **governmental authorities** involved in decision making processes concerning the Arctic
- **Media** and the public **including NGOs**

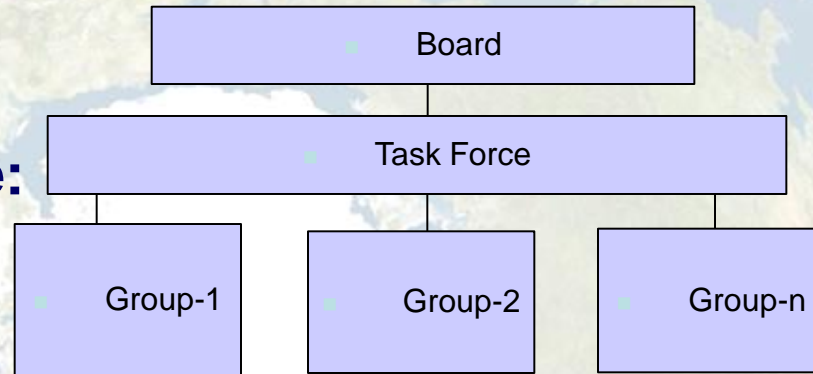
The project will initially focus on identifying and meeting the needs of the AC WGs

Draft

THE ARCTIC SDI CONCEPT

- How? -

Organisational structure:

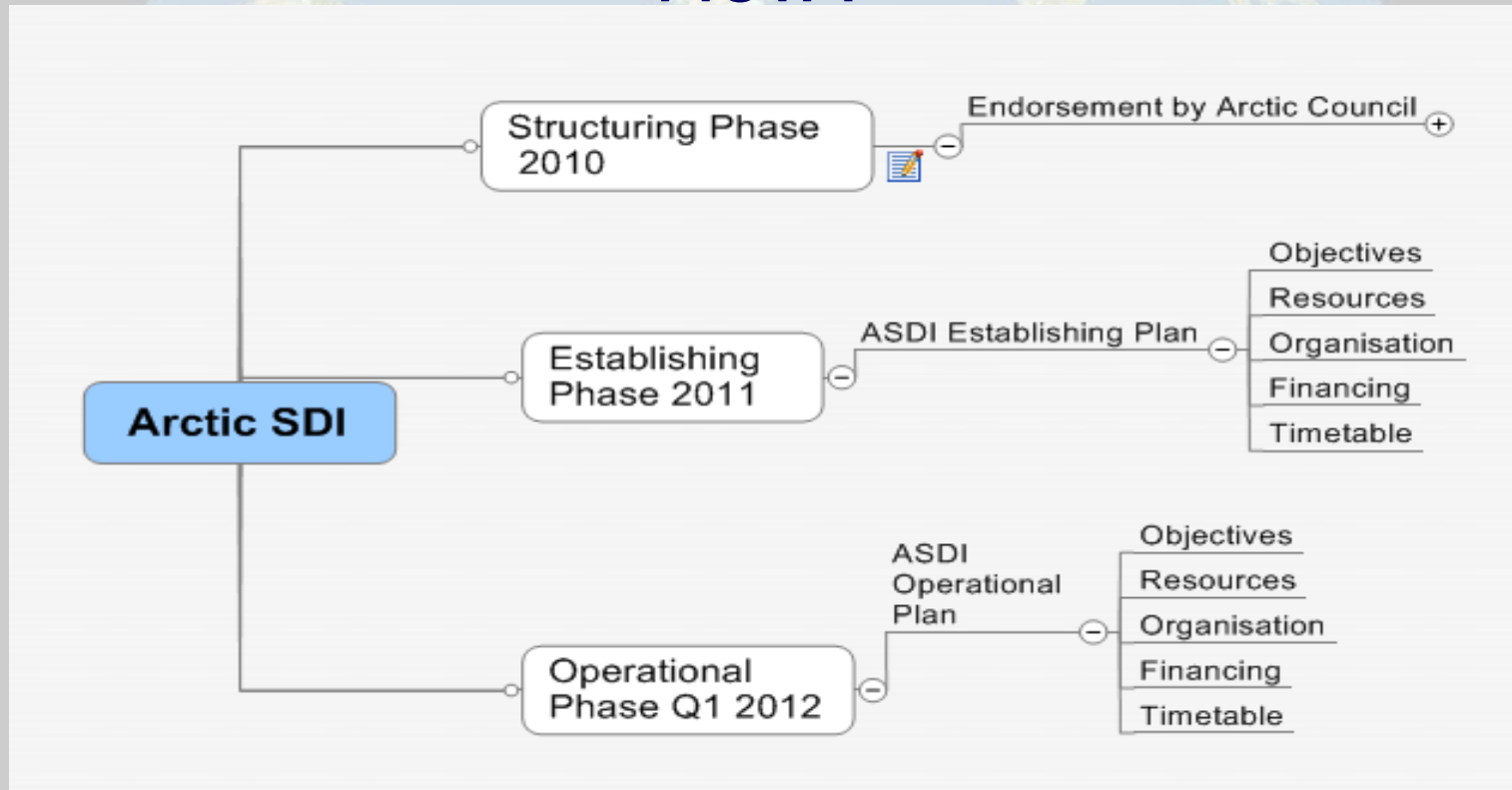


- The circumpolar national mapping agencies (**NMAs**) will lead the **development**, maintenance and administration of the Arctic SDI
- The ASDI-work will **make use of experiences gathered from other ongoing SDI** projects.
- The project's organisational structure will **include a Board**, which will provide overall direction and oversight
- The **work shall be described and agreed on by all parties in a Work Plan**. This concept document will serve as a guideline for the

Draft

THE ARCTIC SDI CONCEPT

- How? -



- The project is organised in three phases:
- Structuring (2010)
- Establishing (2011)
- Operational (2012)

Draft

THE ARCTIC SDI CONCEPT

- How? -

The three phases:

- The **two first phases** will be carried out **as a project**.
- The **Operational Phase** will be carried on **by** the existing organisational structures in the **participating agencies**.
- During the first two phases, **a Task Force** jointly established between the NMAs will be responsible. **The AC WGs and other user groups** will be solicited to provide ongoing input during the Structuring and Establishing phases.
- **During the Structuring Phase, the Task Force must define the vision, the strategies, the long- and short term objectives and the activities needed to reach these objectives.** Important elements are resources and financing.

Draft

THE ARCTIC SDI CONCEPT

- How? -

...the three phases...continued::

- The **costs** for the Task Force during the **Structuring Phase** will be borne **by the employing organisations.**
- **During the Establishing Phase**, additional **costs** for implementation – including system development, data enhancing, etc. – will be **borne by the NMAs or other means.** . .
- Also, the **costs during the Operational Phase** – maintenance of IT hardware & software, updating of NMA geographic data and management costs etc. – will be **financed as above.**

- How to integrate AC WG data into the Arctic SDI needs to be

Draft

THE ARCTIC SDI CONCEPT

- How? -

Partnership framework:

- **Agreements between NMAs concerning organisation, implementation and financing** of each of the three phases: Structuring, Establishing and Operational.
- **Agreement between all data providers** concerning data provision and data policy e.g. specifications, standards, quality, terms and conditions for use of the data, etc.

Draft

THE ARCTIC SDI CONCEPT

- How? -

Technology:

- The project will – if and when suitable – **make use of technologies**, data and experiences **gained from the GIT-Barents project**.
- The **IT architecture** should be based on a **distributed data structure**.
- **Open source technology** should be used whenever feasible.



Draft

THE ARCTIC SDI CONCEPT

- Timetable -

Milestones (from March 12, 2010):

- **25-26 January, Arctic Frontier Conference in Tromsø.** Prior to the meeting, this concept document was sent to the participating countries' NMAs (potential members of the Task Force) with a two week period for comments. When this period elapsed, it was sent to all Arctic Council Working Groups.
- **28 February, Meeting between Arctic SDI and Arctic Council**
A meeting was held with the Chairs of the Arctic Council Working Groups in Copenhagen.
- **8-12 June, International Polar Year Science Conference**
A kick-off meeting of the Arctic SDI Task Force will be planned to coincide with the IPY meeting in Oslo.



Draft

THE ARCTIC SDI CONCEPT

- Timetable -

Milestones (from March 12, 2010)...continued:

- **Late August / early September, Approval of Proposed Project Plan**

Should the Task Force decide that integration into the Arctic Council structure is desirable, a proposed project plan must be in place at this time in order to be prepared for the November SAO meeting.

- **October, The Global Spatial Data Infrastructure Conference, Singapore**

Members of the Task Force are invited to present three papers on the Arctic SDI at the GSDI conference at a focused afternoon roundtable.

- **Early November, SAO Meeting**

Information on the Project plan to the SAO to be provided by the Task Force at least 30 days in advance, i.e. early October.

- **November/early December**

Signing of agreement regarding the Establishing Phase

Draft

THE ARCTIC SDI CONCEPT

- The principle -

