

Three party seminar, Nuuk - March 25-28 2014

**Arctic Spatial Data Infra Structure –
Arctic SDI**



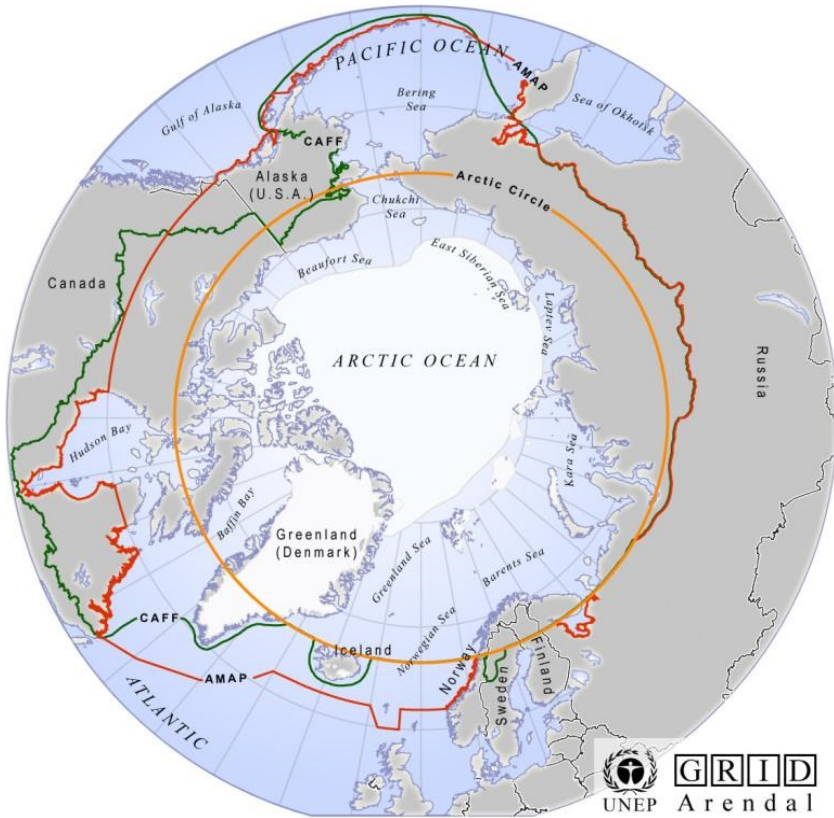
Arctic SDI

A cooperation between the mapping agencies of:

- Canada
- Denmark including Greenland and Faroe island
- Finland
- Iceland
- Russia
- Sweden
- USA



Arctic SDI



- **1/6 of the earth's landmass**
- **More than 30 million km²**
- **8 countries**
- **24 hours all time zones**



Aim and vision of Arctic SDI

- Arctic SDI will provide access to geo-referenced thematic data over the Arctic which means that the data can be related to a reference map across borders of the Arctic countries



User groups for an Arctic SDI

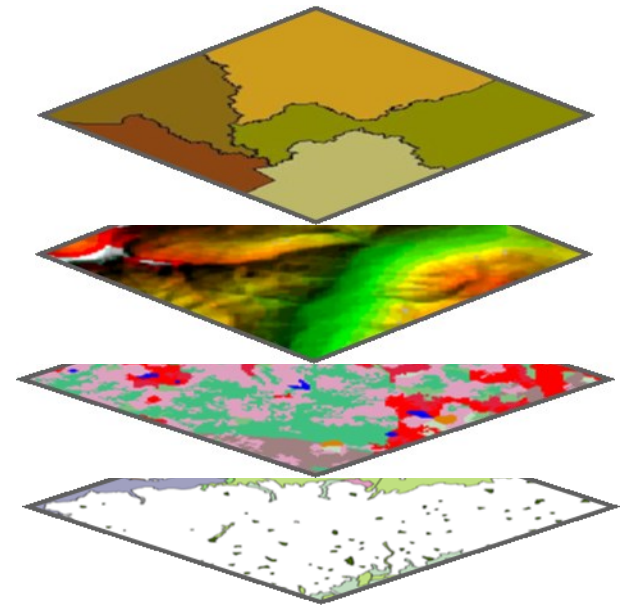
- The Arctic Council Working Groups:
 - Arctic Contaminants Action Program (ACAP)
 - Arctic Monitoring and Assessment Programme (AMAP)
 - Conservation of Arctic Flora and Fauna (CAFF)
 - Emergency Prevention, Preparedness and Response (EPPR)
 - Protection of the Arctic Marine Environment (PAME)
 - Sustainable Development Working Group (SDWG)
- Research institutions
- Government and governmental authorities
- Citizens including NGOs
- Private Enterprises and business



Main content of the Arctic SDI

The Arctic SDI is an infrastructure that provides a web portal with easy access to:

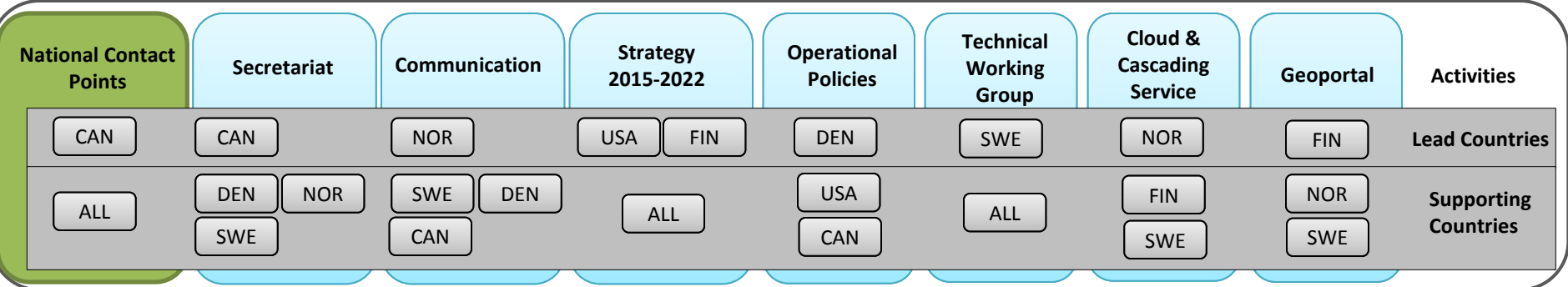
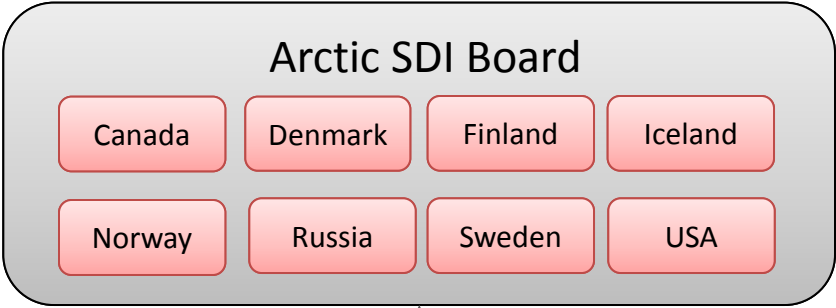
- Reference data as a Web Map Service
- Thematic data (birds, icecover, ship routes, land cover change, flora etc.)
- A searchable metadata-catalogue



Use of the Arctic SDI

- Research
- Planning
- Political processes
- Public administration and management
- Emergency prevention
- Business development





Activities and division of work

Activity	Lead country
Secretariat for the chair of the board and chair of the national contact point	Canada
Communication, website ect.	Norway
Tecnical working group	Sweden
Development of legal/adm. operational policies	Denmark
Development of Arctic SDI strategy 2015-2010	USA
Establish and operate Arctic SDI Web Map Service	Norway
Artic SDI Web Portal for reference map and thematic data – including the CAFF-data	Finland

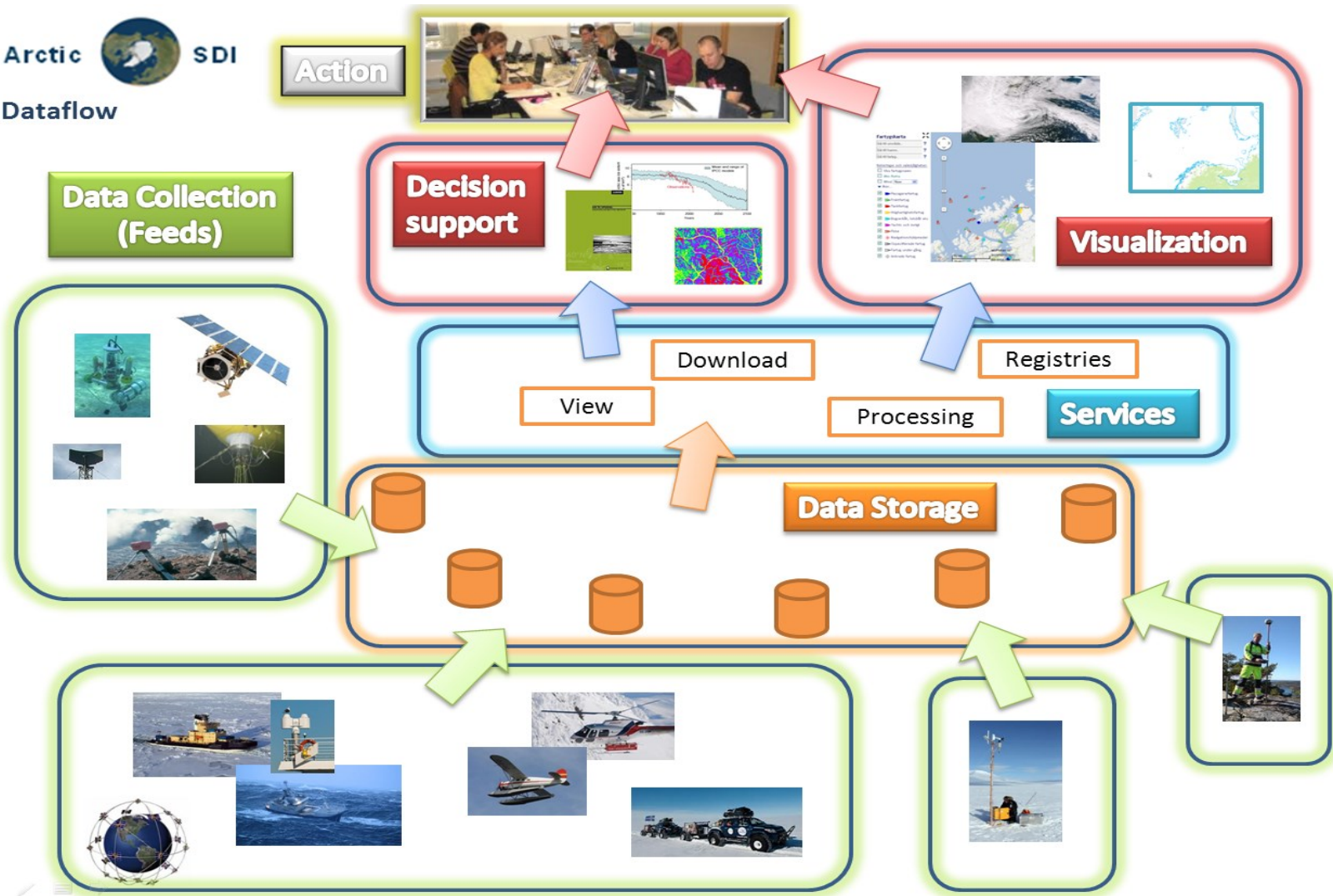


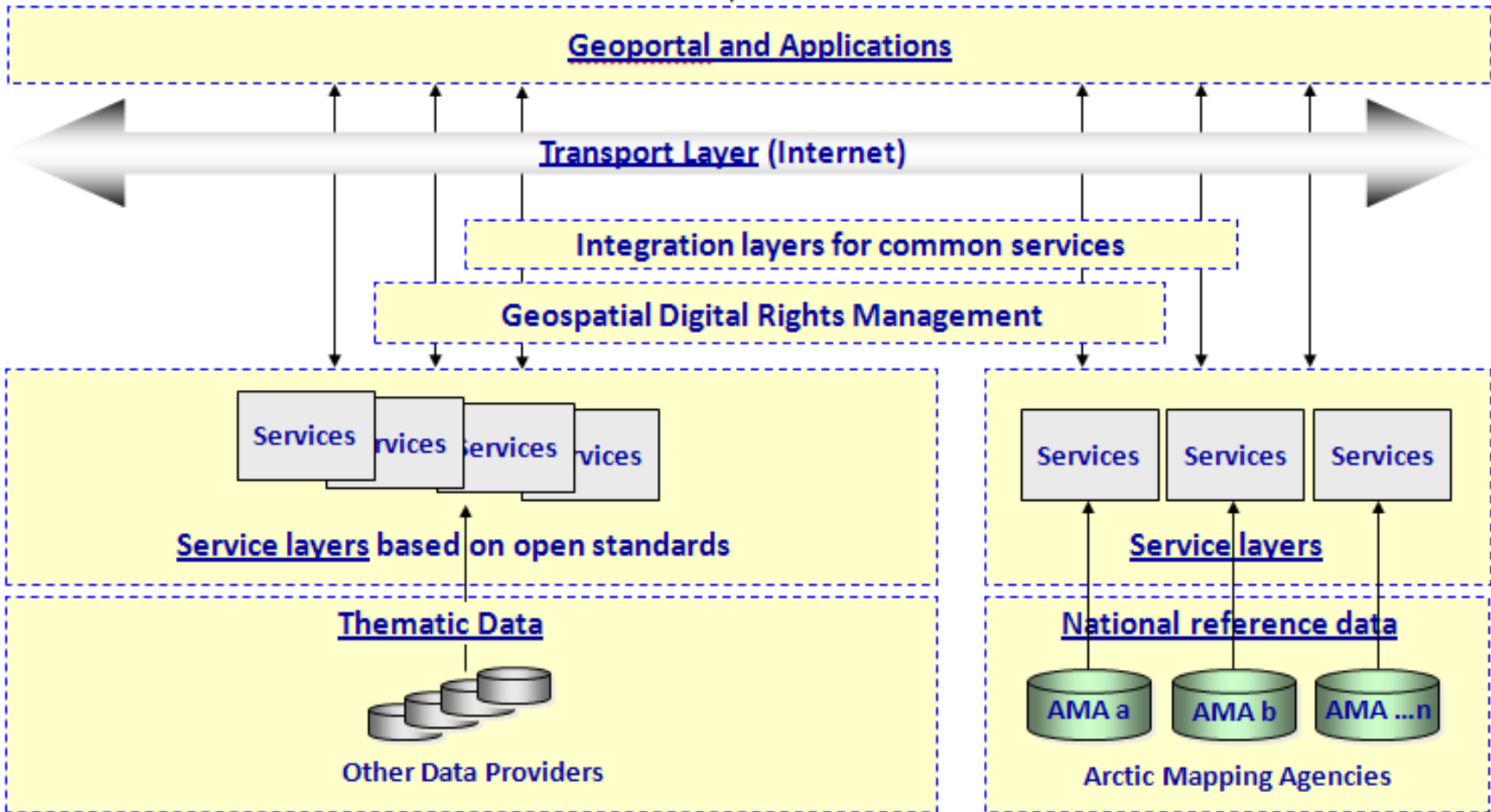
Implementation

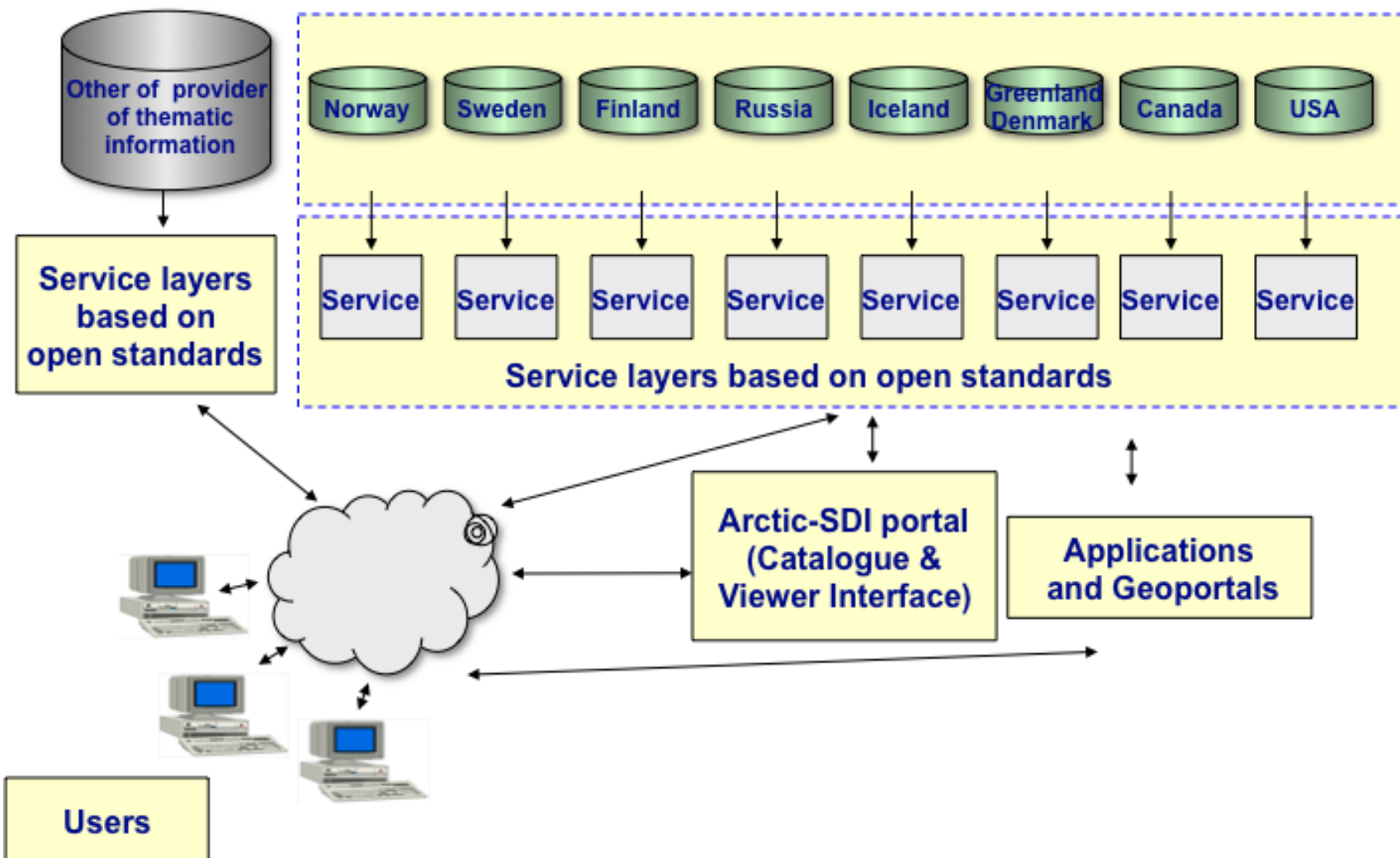
Ultimo 2014:

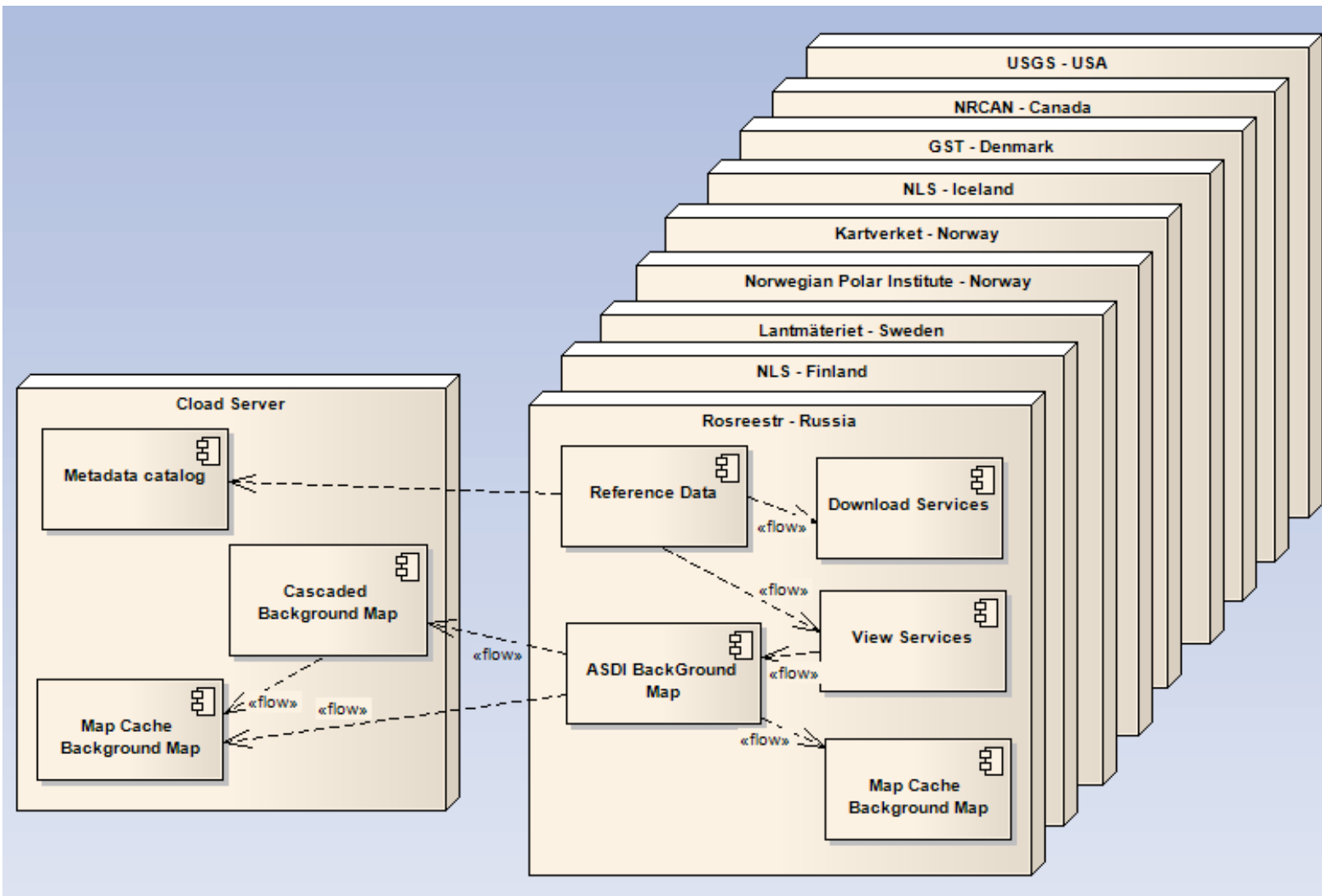
- Web portal
- Web map service
- CAFF thematic data



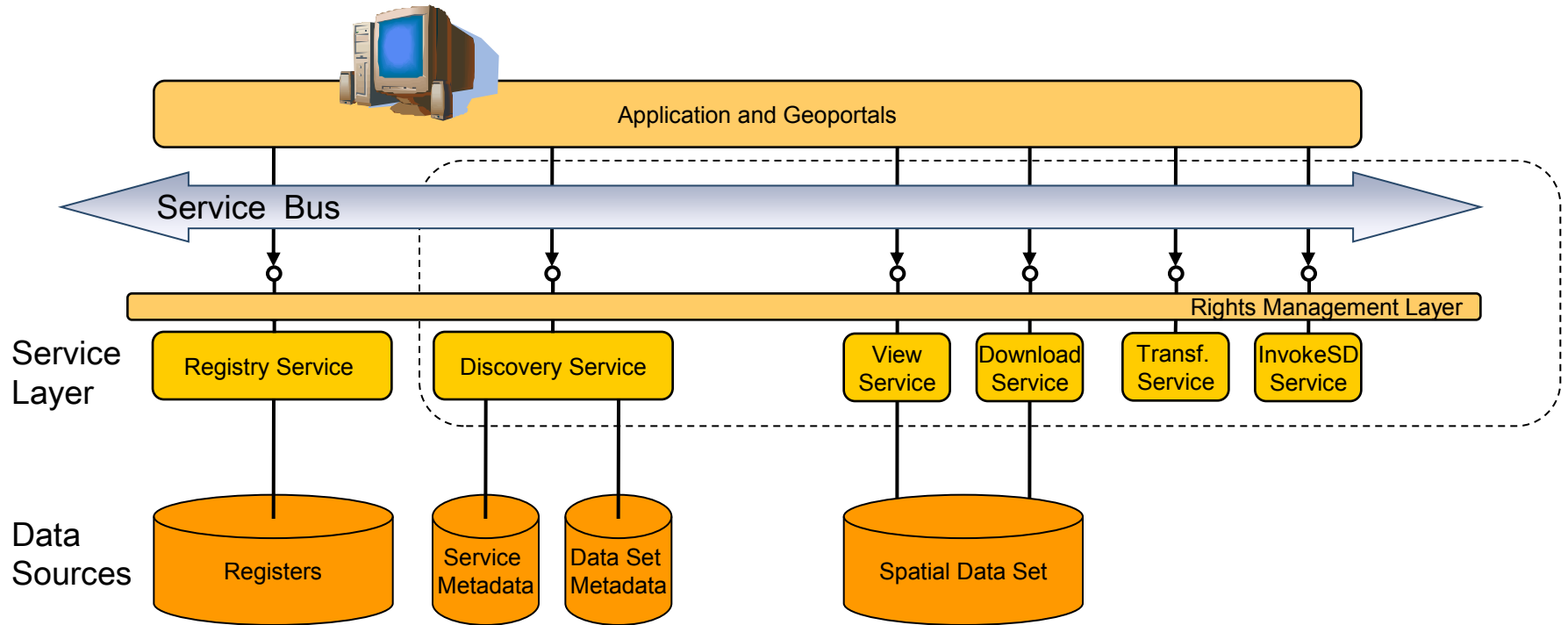








ISO 19115 / INSPIRE architecture

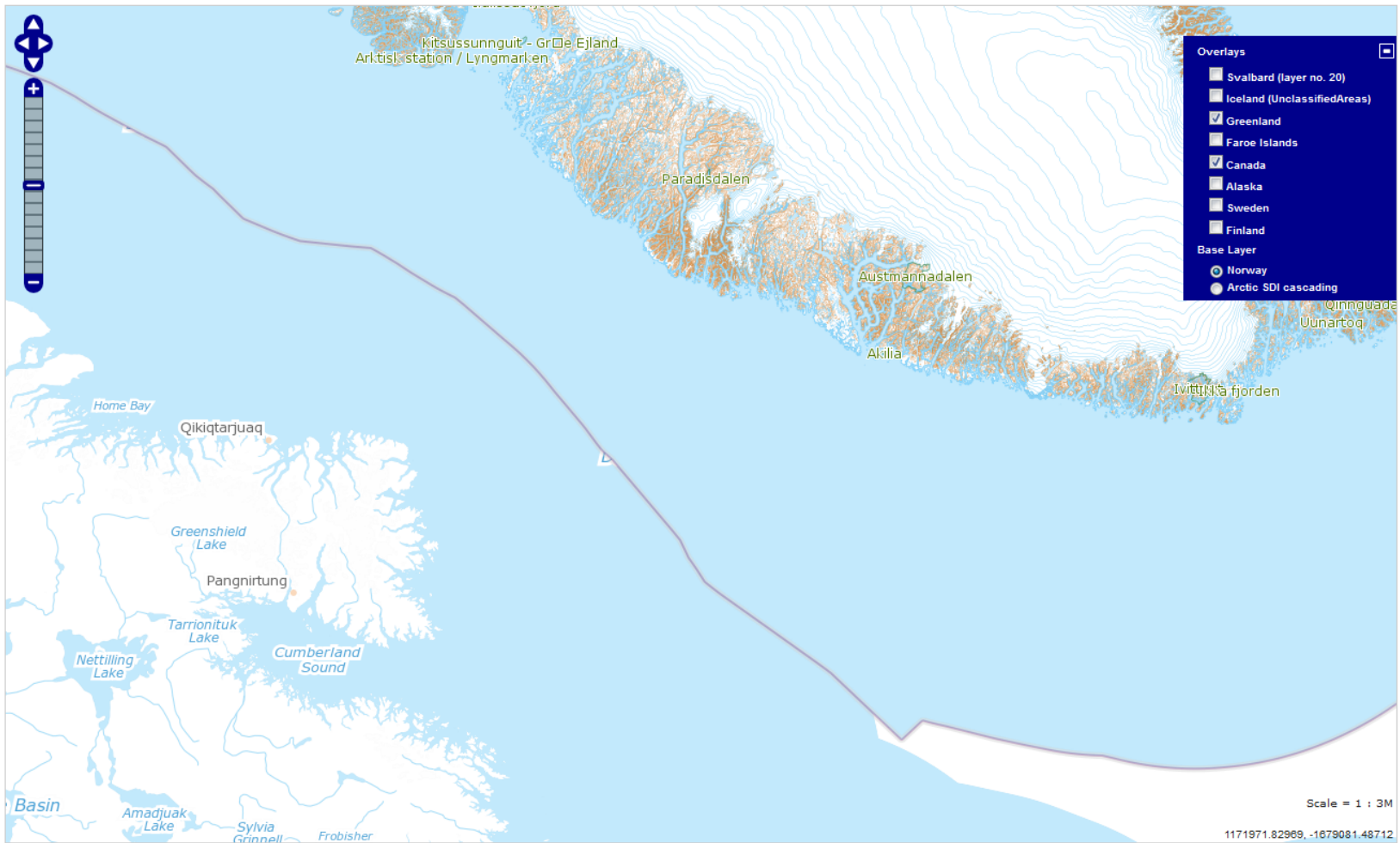


Different levels

Building on OGC standards

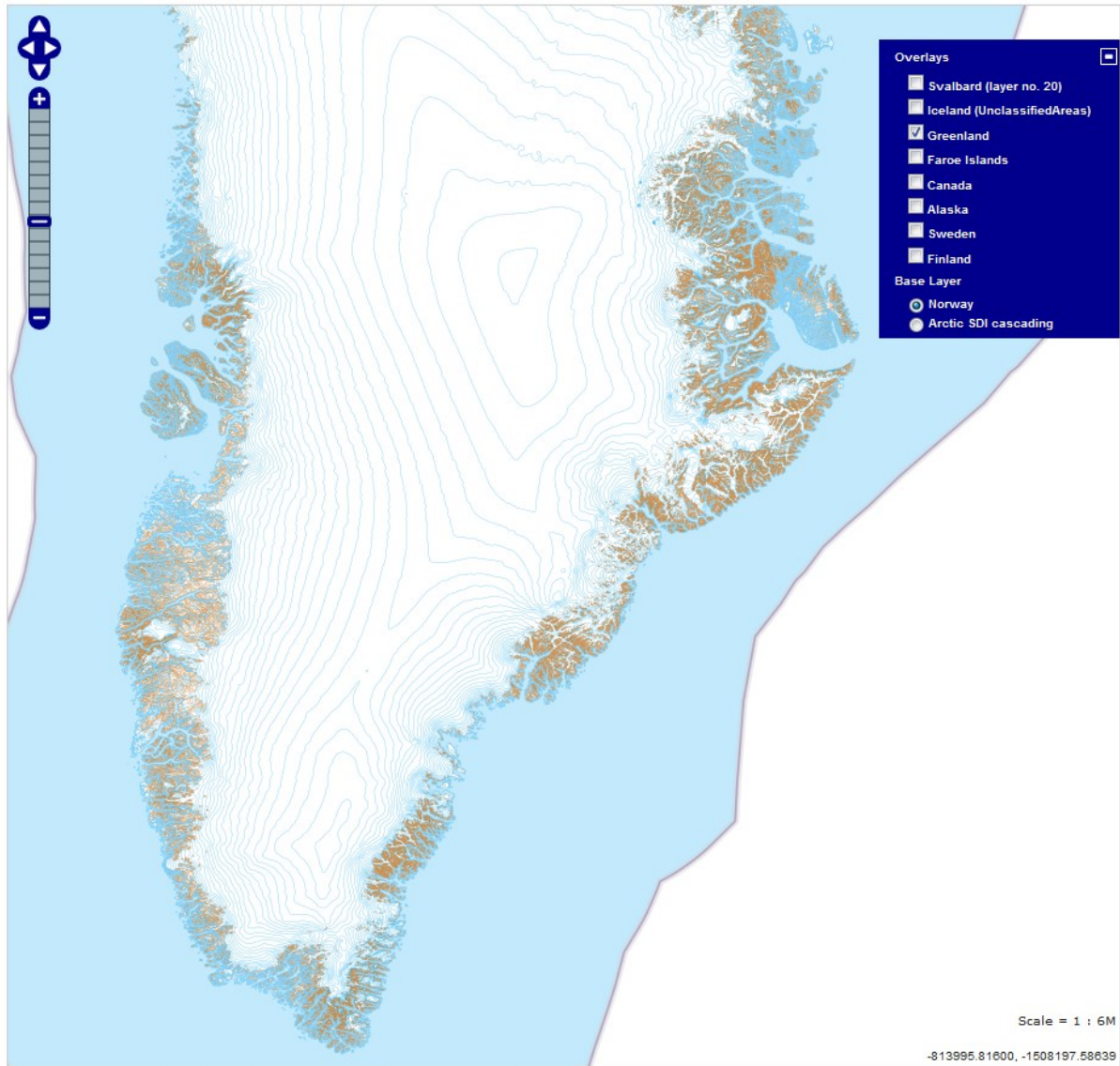
1.Discovery	HTML5	GeoNetworks
2.View	WMS, WMTS	GeoServer, Mapserver
3.Download	WFS, WCS	GeoServer, Mapserver
4.Transform	WPS	?
5.Invoke	?	?





Zoom to hotspot: Current projection:





Zoom to hotspot: Current projection:

