

Make Arctic data accessible and reusable – roadmap to open and cost effective data management policy

Fredrik Persäter

Arctic SDI National contactpoint for Sweden

Lead of the Arctic SDI Technical Working Group

Swedish Mapping Cadastre and Land Registration Authority



- System of systems

- Data
- Platforms & Services
- Resources (finance and personel)
- Governance (Policies, agreements)



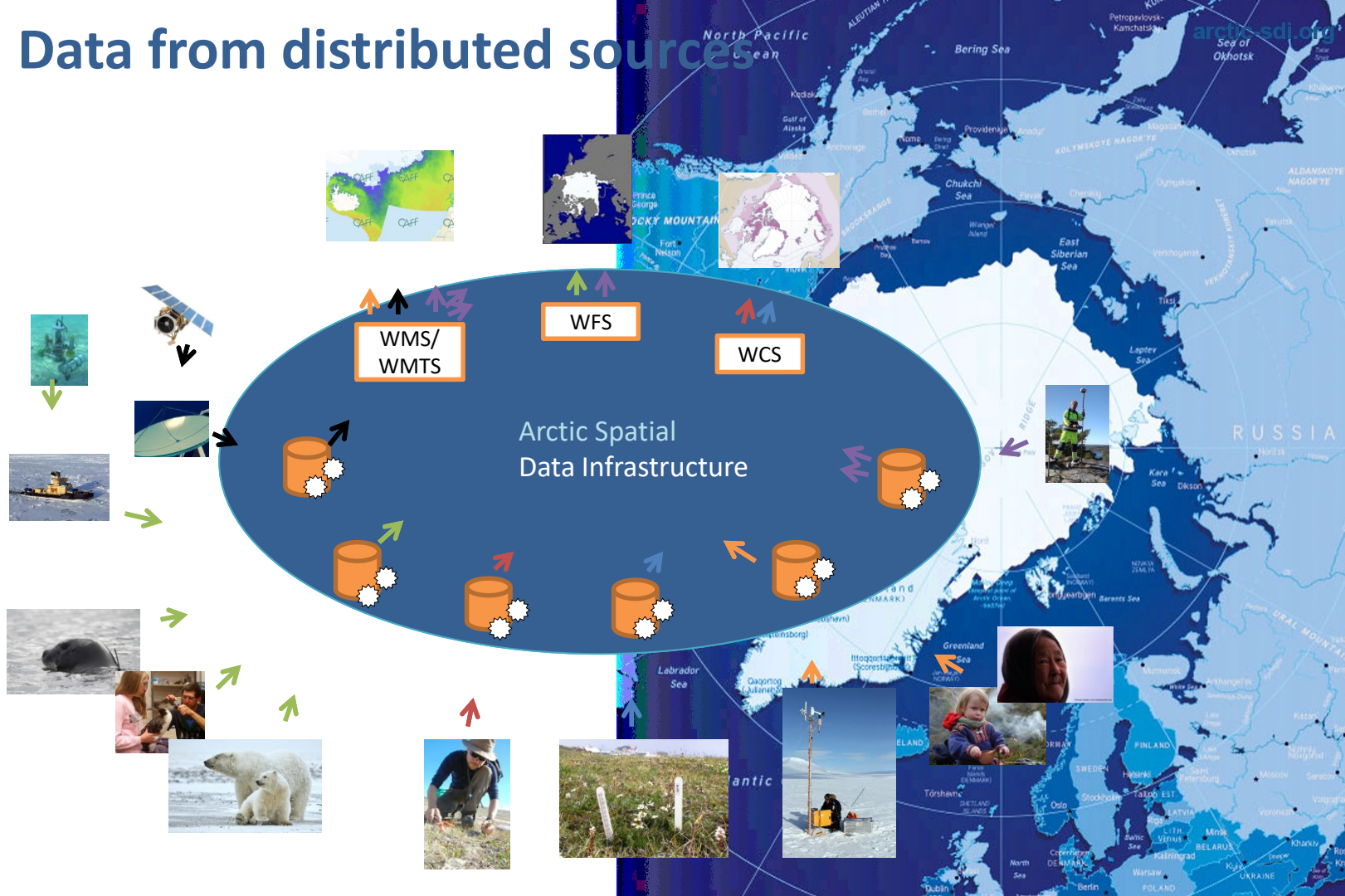
Why Arctic SDI?

- Increase and broaden use of data from Arctic Mapping Agencies
 - ✓ Pan-arctic Topographic Basemap
 - ✓ Pan-arctic Place name service
- Driving force to the development of a Spatial Data Infrastructure for the Arctic

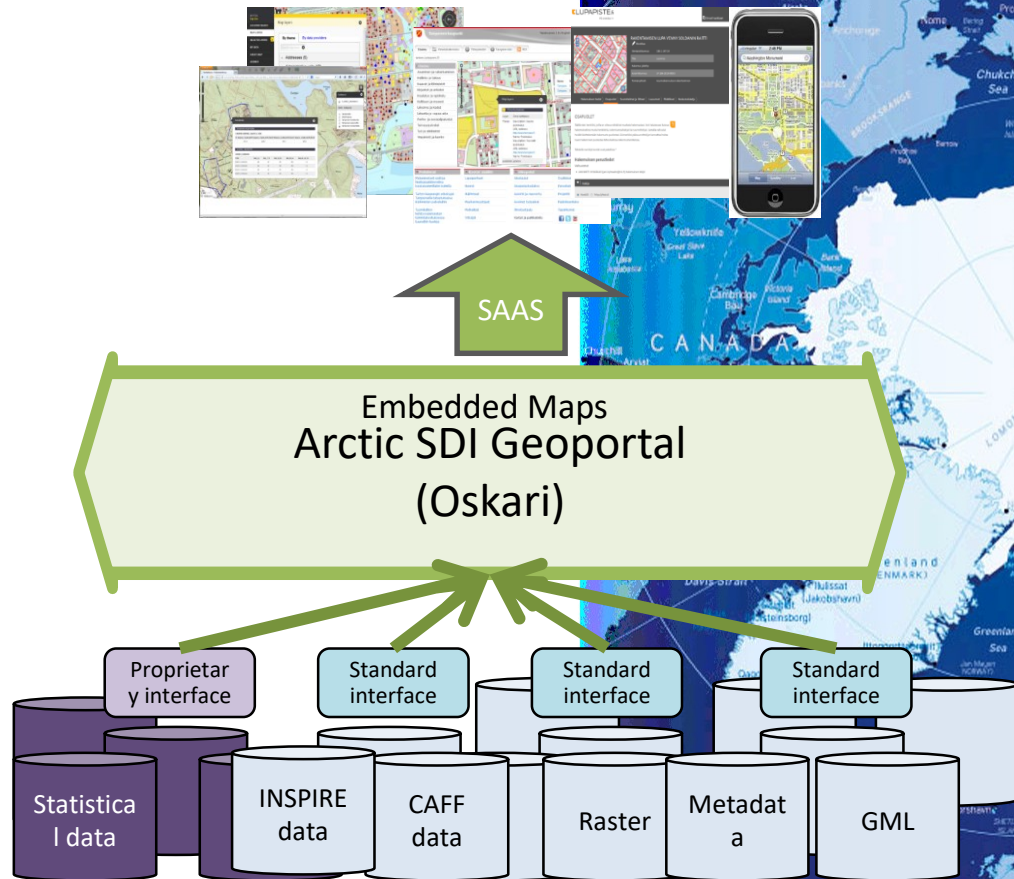




Data from distributed sources



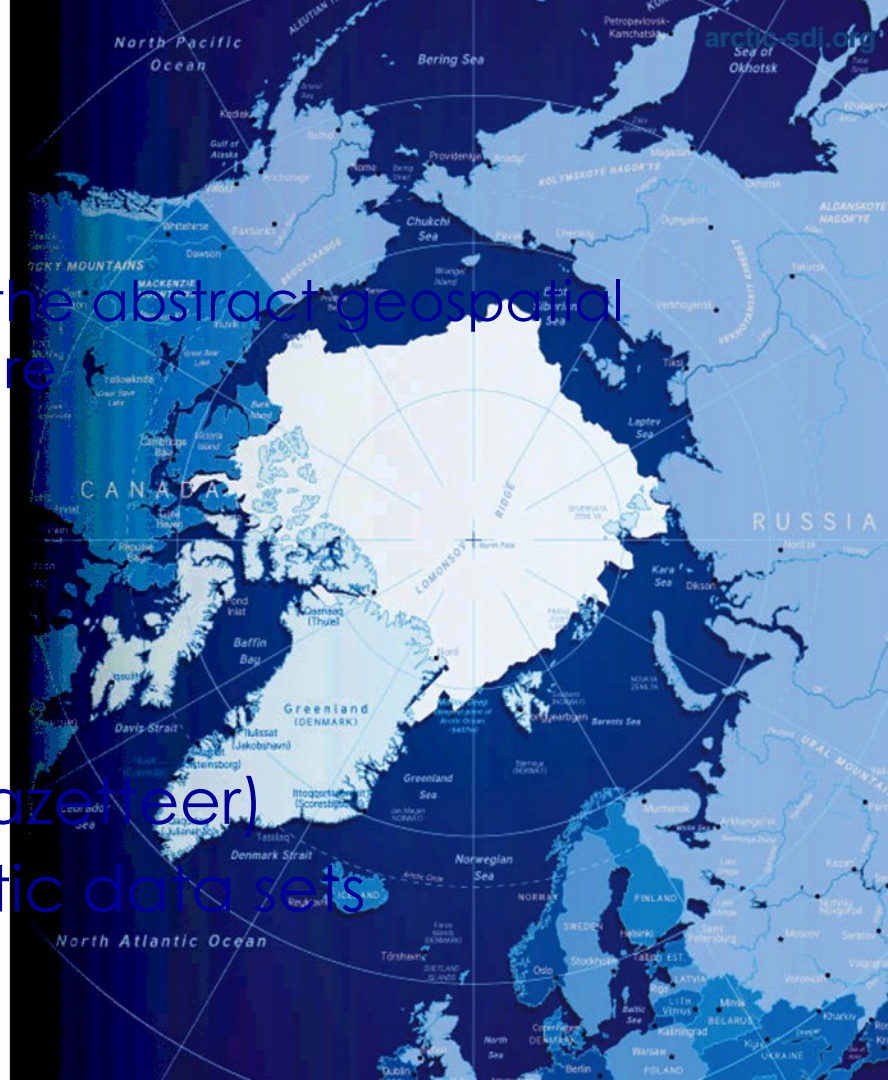
Software As A Service Hides the complexity



Geoportals - access point to the abstract geospatial data and services Infrastructure

Basic Elements

- Basemaps
- Metadata Catalogue
- Placenames search (Gazetteer)
- Recommended thematic data sets



User needs – Arctic Council WGs, 2015

- Digitalized data
- Easy access to data in general
- Easy access to specific data sets
- Data to be interoperable
- Guidance and tools



User needs Assessment

- User needs assessment for the international Arctic Spatial Data Infrastructure
- Better access to geospatial data for Arctic marine areas – User Survey Report



Data/Data Architecture

- Need of a consistent architecture that allows sharing of data
- Access to free and open Earth Observation data

Geoportal to Geodata platform

- Investigate processing of data in the cloud - extend the Geoportal to Geodata platform
- Currently access to specialized knowledge are required to access and prepare raw satellite data
 - ***Investigate integration of the Open Data Cube and Analysis Ready Data (ARD) - lower the barrier of using BIG Data in individual applications***

Standardization process

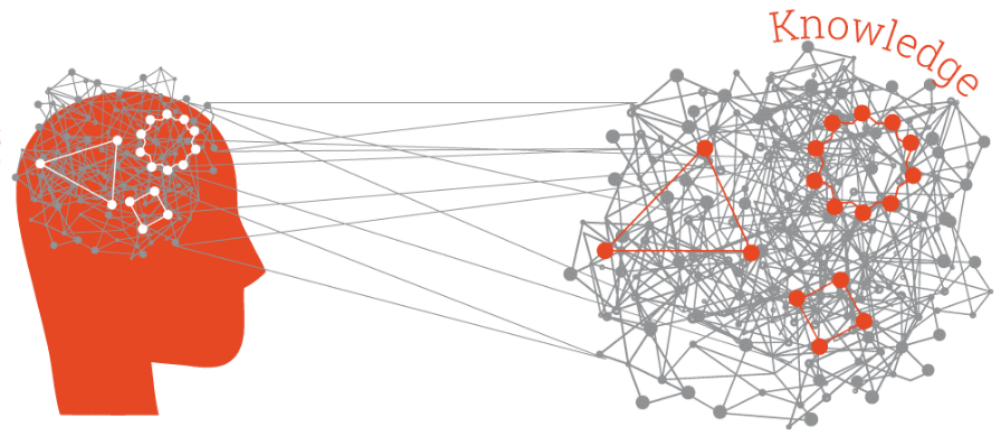


- The ongoing technical development affects the standardization world, which however has a slower process
- Constant monitoring on how standardization evolves is necessary



Quality of Service

- Map Services disseminated through the Geoportal must always be available and stable
- Metadata for services must be of good quality



Geoportal Requested new features

- Analysis and manipulation tools – consultation with users regarding their needs
- Tools for handling Earth Observation data seems to be a hot topic
- Possibilities to connect to social medias

